

## 风扇与过滤器套件 Fan-and-Filter Kit

型号: HFL607 系列  
Model: HFL607 Series

### 外观 Appearance

#### 入口过滤器 Inlet Filter

- HFL607.230□□-□
- HFL607.115□□-□



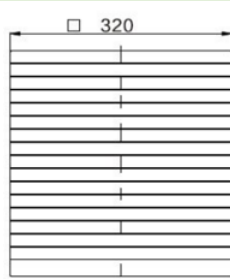
#### 出口过滤器 Outlet Filter

- HFL607. 200

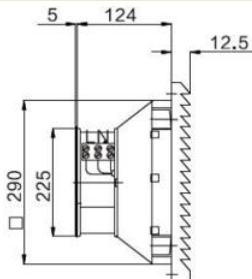


### 尺寸图 Drawings

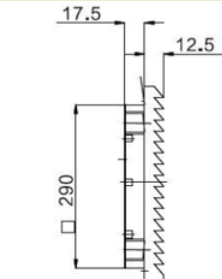
尺寸单位: mm



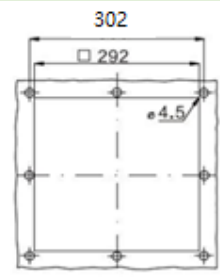
正视图  
Front View



侧视图(入口)  
Side View(Inlet)



侧视图(出口)  
Side View (Outlet)



安装开孔图  
Cut-out

### 主要参数 Paramters

型号	Model	HFL607.230□□-□	HFL607.115□□-□
额定电压	Rated Voltage	230V,50/60Hz	115V,50/60Hz
额定功率	Rated Power	119/158W	112/148 W
运行噪声	Working Noise	68/70 dB	
空气流量(带过滤垫)	AirFlow(with Filter mats)	700/750 m <sup>3</sup> /h	
接线方式	Wiring Type	预置端子 (Connect with preset terminal)	
最大尺寸(宽×高×深)	Sizes (W*H*D)	320 × 320 × 141.5 mm	
开孔尺寸(宽×高)	Cut-out(W*H)	292 × 292 mm	

## • 技术规格 Specifications

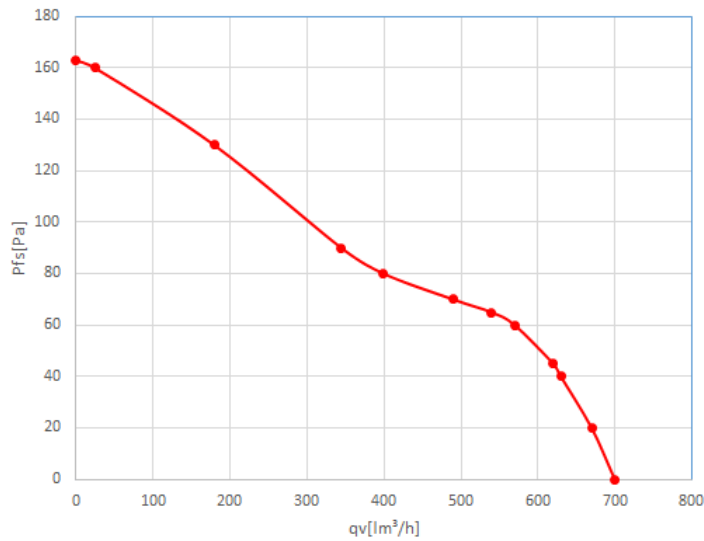
风扇类型	Fan Type	滚珠轴流风扇, 使用寿命(L10, 10°C): 50,000 小时 Axial-flow fan, ball bearing, service life (L10, 10°C): least 50,000 hours
风扇产地	Origin of Fan	国产、台湾、德国三种选择 Three Options: China • Taiwan(China) • Germany
密封垫	Gasket	寿命不少于 10 年 Service life: least 10 years
过滤棉型号	Filter Mat Type	FLT07.12-G3
过滤棉材料	Filter Mat Material	工业用化学纤维 Industrial Chemical Fiber
过滤等级	Filter Grade	G3 (按 EN 779 测试) G3 (Test on EN779)
过滤效率	Filter Efficiency	90%
ABS 阻燃等级	ABS Flame retardant grade	可选阻燃 UL94-V0 Optional for UL94-V0
外壳材质	Filter Shell Material	ABS 工程塑料 ABS Engineering Plastics (可选 ASA+PC 合金材料, 运行温度-40°C ~ +80°C) (Optional ASA+PC Alloy Material, with a Operating Temperature from -40°C to +80°C)
外壳颜色	Filter Color	RAL7035 (可选 RAL7032) RAL7035 (Optional RAL7032)
运行温度	Operating Temperature	-25°C ~ +55°C
储存温度	Storage Temperature	-30°C ~ +70°C
运行/存储湿度	Operating / Storage Humidity	不超过 90% RH No more than 90% RH
重量	Weight	3480 g (带国产风机) (With fan made in China) 3380 g(带台湾风机) (With fan made in Taiwan(China)) 3380 g(带德国风机) (With fan made in Germany)
防护等级	IP Grade	IP 54 (加防喷水罩可提高到 IP 56) IP 54 (Reach IP 56 while adding Water-proof Cover)
认证	Certificate	CE、UL 认证; 符合 ROSH、REACH 指令 CE、UL Certificate; Comply with ROSH, REACH instruction
EMC 兼容	EMC Compatibility	可选(Optional)

风阻曲线

风压与风量曲线图(红线) -50Hz

## Air Volumn

## Wind Pressure and Air Volumn(Red Line) -50Hz



## 认证证书 Certificate

## CE 认证 & EMC 兼容性测试 CE & EMC Compliance Test



## 阻燃性能测试 Flame retardant Test



## IP 防护等级测试 IP protection grade Test



## • 订货编号 Type Number

订货型号	尺寸代码							电压			风扇产地			阻燃	EMC
	01	02	03	04	05	06	07	230V	115V	24V	中	台	德		
HFL607.230C							●	●			●				
HFL607.115C							●		●		●				
HFL607.230TF-E							●	●				●		●	●
HFL607.115TF-E							●		●			●		●	●
HFL607.230DF-E							●	●					●	●	●
HFL607.115DF-E							●		●				●	●	●